

Standard Colors



Premium Colors

Premium colors require a nominal surcharge.



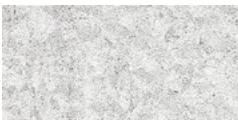
Metallic Colors

Metallic colors are premium finishes which require a nominal surcharge.

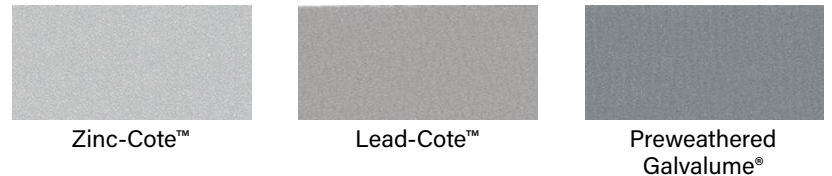


Natural Metal Finish

Acrylic-Coated Galvalume® is a coated sheet product that combines the corrosion resistance of Galvalume® steel sheet with a clear, organic resin applied to the top side and bottom side of Galvalume® substrate.



Acrylic-Coated Galvalume®



Print Pattern Finishes

Consult BMC on print pattern pricing and availability.



BERRIDGE STOCK AVAILABILITY AND COLOR DETAILS

S - Stock Color N - Non-Stocking Color N/A - Not Available

Standard Colors	24 Gauge		22 Gauge*		0.032 Aluminum*		0.040 Aluminum*		SR	EM	SRI
	48"	42"	48"	42"	48"	42"	48"	42"			
Aged Bronze	S	S	S	N	N	N	N	N	0.31	0.85	31
Almond	S	S	S	N	N	N	N	N	0.65	0.86	77
Bristol Blue	S	S	N	N	N	N	N	N	0.33	0.85	33
Buckskin	S	S	S	N	N	N	N	N	0.43	0.83	46
Burgundy	S	S	N	N	N	N	N	N	0.32	0.84	32
Charcoal Grey	S	S	S	S	N	N	N	N	0.29	0.84	28
Cityscape	S	S	S	S	N	N	N	N	0.48	0.85	54
Colonial Red	S	S	N	N	N	N	N	N	0.35	0.83	35
Copper Brown	S	S	N	N	N	N	N	N	0.32	0.85	32
Dark Bronze	S	S	S	S	N	N	N	N	0.28	0.85	27
Deep Red	S	S	N	N	N	N	N	N	0.41	0.84	44
Evergreen	S	S	N	N	N	N	N	N	0.30	0.83	29
Forest Green	S	S	S	N	N	N	N	N	0.30	0.83	29
Hartford Green	S	S	N	N	N	N	N	N	0.27	0.83	25
Hemlock Green	S	S	N	N	N	N	N	N	0.31	0.84	31
Matte Black	S	S	S	S	N	N	N	N	0.26	0.83	24
Medium Bronze	S	S	S	S	N	N	N	N	0.31	0.85	31
Parchment	S	S	S	N	N	N	N	N	0.60	0.85	71
Patina Green	S	S	N	N	N	N	N	N	0.34	0.85	35
Royal Blue	S	S	N	N	N	N	N	N	0.27	0.85	26
Shasta White	S	S	S	N	N	N	N	N	0.61	0.85	73
Sierra Tan	S	S	S	N	N	N	N	N	0.39	0.85	42
Teal Green	S	S	N	N	N	N	N	N	0.26	0.84	25
Terra - Cotta	S	S	N	N	N	N	N	N	0.36	0.84	38
Zinc Grey	S	S	S	S	N	N	N	N	0.39	0.85	42
Acrylic-Coated Galvalume®	S	S	S	S	N/A	N/A	N/A	N/A	0.67	0.20	59
Premium Colors*											
Award Blue	S	S	N	N	N	N	N	N	0.17	0.83	11
Natural White	S	S	N	N	N	N	N	N	0.71	0.85	86
Metallic Colors*											
Antique Copper-Cote	S	S	N	N	N	N	N	N	0.33	0.84	34
Champagne	S	S	N	N	N	N	N	N	0.40	0.85	43
Copper-Cote™	S	S	N	N	N	N	N	N	0.51	0.85	59
Lead-Cote™	S	S	N	N	N	N	N	N	0.36	0.86	38
Preweathered Galvalume®	S	S	N	N	N	N	N	N	0.40	0.85	43
Zinc-Cote™	S	S	N	N	N	N	N	N	0.53	0.83	59
Print Pattern Finishes**											
COR-TEN AZP® Raw	S	N	N	N	N/A	N/A	N/A	N/A	0.32	0.89	34
Walnut	S	N	N	N	N/A	N/A	N/A	N/A	-	-	-
Honey Walnut	S	N	N	N	N/A	N/A	N/A	N/A	-	-	-
Rosewood	S	N	N	N	N/A	N/A	N/A	N/A	-	-	-
Boston Cherry	S	N	N	N	N/A	N/A	N/A	N/A	-	-	-

Testing results for Kynar 500® or Hylar 5000® PVDF Resin-Based Color Finishes coil coating applications:

- Specular Gloss: (ASTM D-523) Low and medium gloss only
- Color Uniformity: (ASTM D-2244) Color controlled both instrumentally and visually
- Dry Film Thickness: (ASTM D-7091, ASTM D-1005, NCCA 11-13, 11-14, 11-15) Primer 0.20 ± 0.05 mil, topcoat 0.75 ± 0.05 mil
- Hardness: (ASTM D-3363, NCCA 11-12, Eagle Turquoise Pencils) HB Minimum
- Adhesion (X-Cut): (ASTM D-3359) No adhesion loss
- Adhesion (Crosshatch): (ASTM D-3359) No adhesion loss
- Abrasion Coefficient: (ASTM D-968) 100 liters/mil topcoat
- Direct Impact Flexibility: (ASTM D-2794, Gardner Impact Tester, 1/10" Distortion) Excellent, no removal
- Reverse Impact Flexibility: (NCCA Spec. 11, ASTM D-2794, Gardner Impact Tester, 5/8" ball Impact force in inch pounds equal to metal thickness) Excellent, no cracking or loss of adhesion
- Formability: (ASTM D-4145, 180° T-Bend on 1/8 Mandrel) No cracks or loss of adhesion
- Erosion: (20 years, 45° South Florida) Maximum 15% loss
- Humidity Resistance: (ASTM D-2247) Passes 2000 hours on Galvalume® and 4000 hours on Aluminum
- Acid Resistance: (ASTM D-1308, Proc. 3.1.1, 10% Sulfuric Acid spot test, 24 hour exposure) Excellent, no effect
- Salt Spray Resistance: (ASTM B-117) Passes 2000 hours on Galvalume® and 4000 hours on Aluminum
- Alkali Resistance: (ASTM D-1308, Proc. 5.2, 10% Sodium Hydroxide, 24 hour exposure) Excellent, no effect
- Detergent Resistance: (ASTM D-2248, 72 hours immersion in 3% solution at 100°F) Excellent, no effect
- Resistance to Acid Pollutants: (ASTM D 1308 Proc. 3.1.1, 24 hour exposure 10% HNO³ vapors) Excellent, no effect
- Weathering - Color Retention: (ASTM D-2244, 20 years, 45° South Florida) Maximum 5 NBS units color change
- Weathering - Chalk Resistance: (ASTM D-4214, 20 years, 45° South Florida) Not worse than No. 8 rating

Notes:

1. ASTM - American Society for Testing Materials
2. NCCA - National Coil Coating Association
3. Galvalume® is 55% Aluminum-Zinc alloy coated sheet steel and is a registered trademark of BIEC International Inc.
4. Kynar 500® is a registered trademark belonging to Arkema, Inc.
5. Hylar 5000® is a registered trademark belonging to Solvay Solexis, Inc.

S Stock Color; Not subject to a minimum order
 N Non-Stock Color; Subject to inventory on hand; 4500 sf minimum order for 22 Gauge and 0.032 & 0.040 Aluminum
 N/A Not Available
 * Consult BMC on product availability. Premium and Metallic finishes are subject to a nominal surcharge, contact BMC for additional information.
 ** Consult Berridge on pricing and availability for Print Pattern Finishes.

BMC SAN ANTONIO
 6515 Fratt Rd.
 San Antonio, TX 78218
 (210) 650-3050
 Fax (210) 650-0379

BMC HOUSTON
 1720 Maury St.
 Houston, TX 77026
 (713) 223-4971
 Fax (210) 650-0379

BMC DALLAS
 2015 California Crossing
 Dallas, TX 75220
 (972) 506-8496
 Fax (210) 650-0379

BMC DENVER
 7505 E. 41st Ave.
 Denver, CO 80216
 (303) 322-3703
 Fax (210) 650-0379

BMC CHICAGO
 1175 Carolina Dr.
 W. Chicago, IL 60185
 (630) 231-7495
 Fax (210) 650-0379

BERRIDGE FLORIDA SALES CORPORATION***
 8802 Venture Cove
 Tampa, FL 33637
 (813) 335-4505
 Fax (210) 650-0379

BMC PHOENIX
 5717 W. Washington St.
 Phoenix, AZ 85043
 (602) 385-1237
 Fax (210) 650-0379

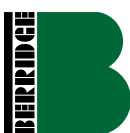
BMC ATLANTA
 319 Lee Industrial Blvd.
 Austell, GA 30168
 (770) 941-5141
 Fax (210) 650-0379

BMC OKLAHOMA CITY
 1400 Exchange Ave.
 Oklahoma City, OK 73108
 (405) 248-7404
 Fax (210) 650-0379

BMC KANSAS CITY
 1235 Southwest Blvd.
 Kansas City, KS 66103
 (913) 227-0855
 Fax (210) 650-0379

BERRIDGE CALIFORNIA SALES CORPORATION***
 8442 Sultana Ave.
 Fontana, CA 92335
 (562) 402-2081
 Fax (210) 650-0379

*** Berridge California and Florida Sales Corporations are separate entities from Berridge Manufacturing Company.



CORPORATE & SALES HEADQUARTERS
 2610 Harry Wurzbach Road
 San Antonio, TX 78209
 (210) 650-3050
 Fax (210) 650-0379

MANUFACTURING FACILITY
 2201 Rudeloff Road
 Seguin, TX 78155
 (830) 401-5200
 Fax (210) 650-0379

WWW.BERRIDGE.COM