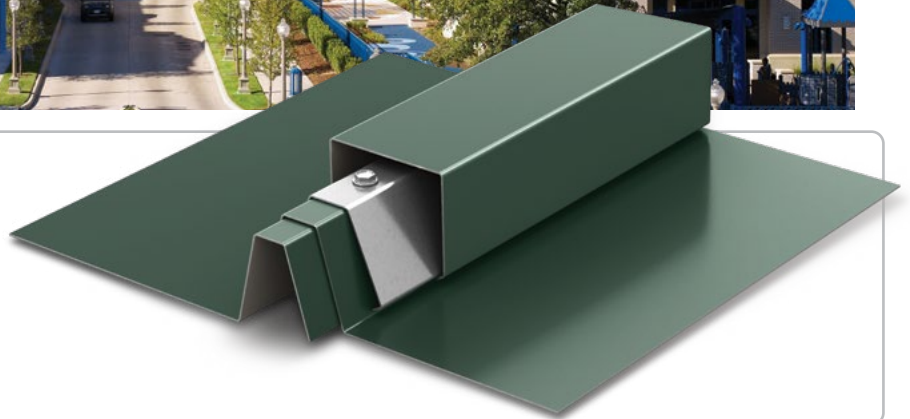


Berridge Batten Seam Panel

ALTERNATIVE SYSTEM



The Berridge Batten Seam Panel is a two-part system utilizing the Deep-Vee Panel and square snap-on battens for bold panel lines.



Materials

24 Gauge Steel

Specifications

Uses: Roof, Fascia

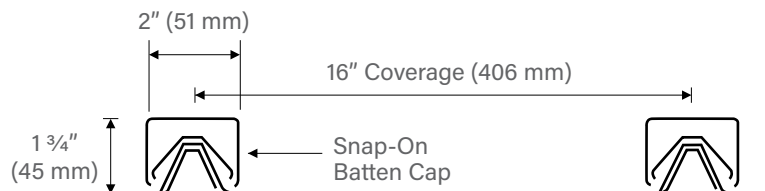
Coverage: 16"

Finishes: Smooth

Fasteners: Concealed

Applications: Open framing, solid sheathing

Seam: 2" wide and 1 3/4" high snap-on batten cap



Installation

- Deep-Vee Panel, Snap-On Batten Cap, and the Batten Seam Inner Rib** are available from the factory in continuous lengths to a maximum of 40'.
- May be site formed in continuous lengths with the Berridge BP-21 Roll Former.
- Use Batten Clip typically at 20" O.C. along each panel rib
- Estimate 50 clips/sq with 1 fastener/clip.
- Use Batten End Cap as mechanical weather closure at bottom of panel runs.
- Use Zee-Closure as mechanical weather closure at ridges, hips, etc. Field cut to fit between panel legs.
- Use Standard Channel closure at end walls and flashed areas*.
- Use Special Channel closure at gable ends and areas where color will show on all sides*.

- Use Snap-On Batten Cap continuously at panel side joints. Estimate 75 LF/SQ. See typical details for splice and eave turn-downs.
- Use Batten Seam Inner Rib** with Inner Rib Expansion Clip to allow for thermal movement of panels over 30' long.

Notes:

* Trim Drawing with dimensions and finish side required for all Berridge manufactured trim pieces

** Batten Seam Inner Rib required for UL 90 certification

Pictured Above

Project: Cooks Hospital - Fort Worth, TX

Architect: RTKL Associates, Inc.

General Contractor: Linebeck Group, LLS

Installing Contractor: Jeff Eubank Roofing Co.

Color: Custom Rich Blue

All information subject to change without notice. See website for details, specifications and Watertightness Warranty requirements.

© Berridge Manufacturing Company 2024 • (800) 669-0009 • www.Berridge.com

BERRIDGE BATTEN SEAM TESTING AND CERTIFICATION SUMMARY CHART

CATEGORY	CHARACTERISTIC	TEST METHOD	PURPOSE	RESULT
FIRE	■ Room Fire Performance	UL 790	Test methods for fire tests of roof coverings	Class A Rating
	■ Room Fire Performance	UL 263	Fire tests of building construction and materials	Design Numbers: P225, P227, P230, P237, P250, P259, P508, P510, P512, P514, P518, P701, P711, P713, P717, P719, P720, P722, P723, P726, P731, P732, P734, P801, P815, P819, & P824
ENVIRONMENTAL	■ Impact Resistance	UL 2218	Impact resistance of prepared roof coverings	Class 4 Rating
PRODUCT LISTINGS	■ Underwriters Laboratories	UL 580 Uplift Class 90	Standard for Tests for Uplift Resistance of Roof Assemblies	Construction No. 262 (24 GA - Purlins)

■ - Steel only □ - Steel and Aluminum
 For further details please visit www.berridge.com



CORPORATE HEADQUARTERS
 2610 Harry Wurzbach Road
 San Antonio, TX 78209
 (800) 669-0009
www.Berridge.com