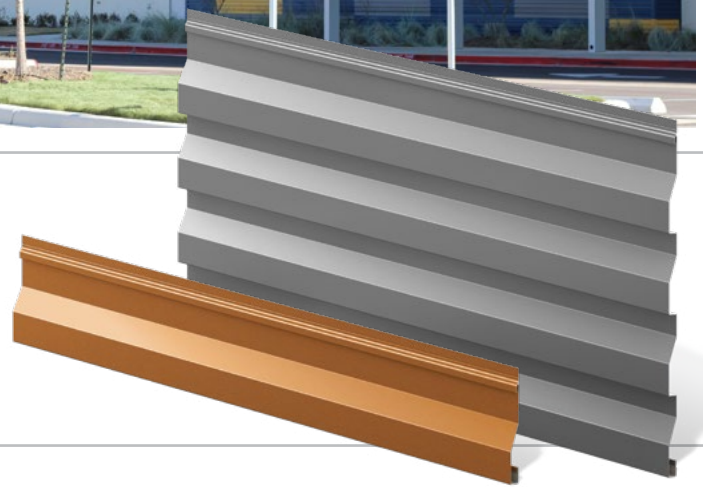


Berridge HR-4 & HR-16 Panel

WALL AND FASCIA PANEL SYSTEM



The Berridge HR-4 Accent Wall Panel and the HR-16 Metal Wall panels are versatile and maintenance-free panels that can be installed horizontally or vertically. Both panels interlock with the HC-16, BR-12, HS-8, HS-12, and Reveal Series panel profiles.



Materials

24 and 22 Gauge Steel
0.032 Aluminum

Specifications

Uses: Wall, Fascia, Screen Wall, Berridge Fencing System

Coverage: HR-4: 4"; HR-16: 16"

Finishes: Smooth

Fasteners: Concealed

Applications: Vertical on fencing; horizontal or vertical over open framing or solid sheathing

Pattern: 7/8" height and 4" rib with 2" reveal

Installation

- Panel is available from the factory in continuous lengths to a maximum of 40'.
- Interlocks with HC-16, BR-12, HS-8, HS-12, and the Reveal Series panel profiles.
- Use siding starter strip to start panel at bottom of soffit or sill.
- Use channel closure at inside and outside corners with or without rubber closures.
- Use standard channel at jambs with rubber closures.
- Use special channel at jambs without rubber closures.
- Use HR-16 rubber closures to prevent air infiltration.

HR-4 Accent Wall Panel

4" Coverage (102 mm)

7/8" (22 mm)

HR-16 Wall Panel

16" Coverage (406 mm)

7/8" (22 mm)

4" (102 mm)

1 1/8" (29 mm)

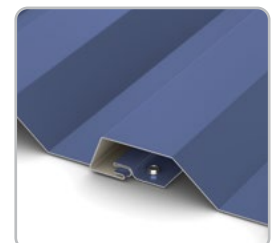
Pictured Above

Project: Compass Rose Manor (Phase 1) - Manor, TX

General Contractor: Bartlett Cocke General Contractors, LLC

Installing Contractor: Texas Roofing Co.

Color: Royal Blue, Zinc Grey, Mustard



Detail of HR Panel Interlock

All information subject to change without notice. See website for details, specifications and Watertightness Warranty requirements.

© Berridge Manufacturing Company 2024 • (800) 669-0009 • www.Berridge.com

BERRIDGE HR-4 & HR-16 PANEL TESTING AND CERTIFICATION SUMMARY CHART

| CATEGORY | CHARACTERISTIC | TEST METHOD | PURPOSE | RESULT |
|------------------|--|--|---|---|
| PERFORMANCE | <input type="checkbox"/> Uplift Resistance | ASTM E-1592* | Test method to determine uplift resistance of open framing systems | See Load Chart on Berridge website |
| AIR AND MOISTURE | <input type="checkbox"/> Water Penetration | ASTM E-331 | Test method for water penetration of metal roofs by uniform static air pressure difference | No Leakage at 15.0 PSF Pressure Differential |
| | <input type="checkbox"/> Air Leakage | ASTM E-283 | Test method for rate of air leakage through exterior metal roofs | Less than 0.01 CFM at 6.24 PSF Pressure Differential |
| PRODUCT LISTINGS | <input type="checkbox"/> Florida Product Approval* | TAS 125 | Local and state approval of products and systems for compliance with the structural requirements of the Florida Building Code | FL #17437.2 (24 GA or 0.032 AL - Steel Girts) FL #14082.2 HVHZ (24 GA - Steel Girts) |
| | <input checked="" type="checkbox"/> Miami Dade* | TAS 202 TAS 201 TAS 203 ASTM E8 | Miami Dade County approval of building products directly related to the structural wind resistance | NOA #23-0926.14 (24 GA - Steel Girts) |
| | <input type="checkbox"/> TDI Listed* | ASTM E-1592 | Texas Department of Insurance Listing for wind capacities | EC-84 (24 or 22 GA - Steel Girts) EC-121 (0.032 AL - Steel Girts) |
| | <input type="checkbox"/> ICC-ES | ASTM E-1592 | Capacity report by the International Code Council | ESR-4712 (24 or 22 GA - Steel Girts; 0.032 AL - Steel Girts) |

■ - Steel only □ - Steel and Aluminum

For further details please visit www.Berridge.com

* HR-16 approved only



CORPORATE HEADQUARTERS
 2610 Harry Wurzbach Road
 San Antonio, TX 78209
 (800) 669-0009
www.Berridge.com