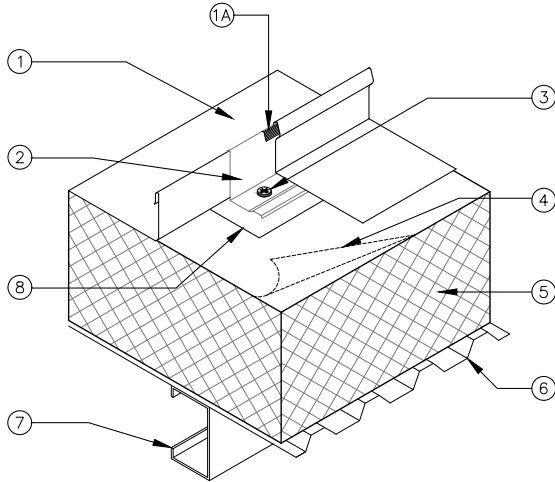


UL 580 CLASS 90 RATED PRODUCT ASSEMBLIES

CONSTRUCTION NO. 689 - Aluminum BERRIDGE ALUMINUM CEE-LOCK PANEL WITH INDIVIDUAL STAINLESS STEEL CEE-CLIPS THROUGH 6" OF RIGID BOARD AND INTO 22 GAUGE STRUCTURAL METAL DECK



- BERRIDGE CEE-LOCK PANEL:** 0.032" coated Aluminum, 16 1/2" wide, 1 1/2" high panel continuous over two or more spans without endlaps.
 - An optional vinyl weatherseal (U.S. Patent 4641475) may be used at panel side joints
- BERRIDGE CEE-CLIP:** One-piece, 1 1/2" high x 1 3/16" wide x 3 1/2" long, No. 24 MSG (Min. yield strength 40,000 PSI) stainless steel. Clip spaced 20" on center at panel side joint.
- FASTENERS (SCREWS):**
 - For Connection of Item #2 to Item #6:** #14-13 DP1 pancake head deck fastener through rigid board and connected to metal deck. Two fasteners per clip. Fastener length to be adjusted to account for thickness of rigid insulation and liner panel with 3/4" minimum penetration into metal deck.
 - For Connection of Item #6 to Item #7 (Not Shown):** 1/4-14 x 1 1/4" HWH 36/7 fastener pattern (fastener every low flute of deck.)
- FELT PAPER:** Two ply, No. 30 lb. per 100 sq. ft.
- INSULATION:** Max. 6" thick, 2.25 pcf density 20 psi compressive strength rigid closed cell polyisocyanurate core fiberglass faced insulation.
- SUBSTRUCTURE (LINER):** No. 22 MSG (Min. yield strength 40,000 PSI) coated steel. Corrugation height to be minimum of 3/4". Endlaps to occur over purlins with panels overlapped minimum 4".
- PURLINS:** 12 MSG (Min. 50,000 PSI) coated steel. Spacing to be:
 - 5'0" on center when Item #6 is connected to Item #7
- CLIP BEARING PLATE:** 6" x 6" NO. 24 MSG coated steel, used with rigid insulation only.

BERRIDGE MANUFACTURING COMPANY

2610 Harry Wurzbach Road, San Antonio, TX 78209 | 800-669-0009 | Fax 210-650-0379

Visit www.berridge.com for the most up-to date information. All information herein subject to change without notice. For technical assistance please contact Berridge.