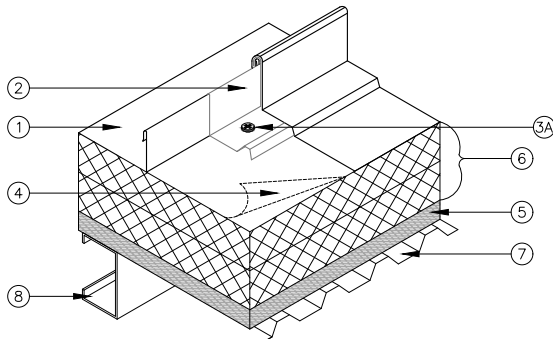


# UL 580 CLASS 90 RATED PRODUCT ASSEMBLIES

## **CONSTRUCTION NO. 608 - Galvalume® BERRIDGE DOUBLE-LOCK ZEE-LOCK PANEL WITH CONTINUOUS ZEE-RIB THROUGH 4" OF RIGID BOARD AND INTO 24 GAUGE STRUCTURAL METAL DECK**



1. **BERRIDGE DOUBLE-LOCK ZEE-LOCK PANEL:** No. 24 MSG (Min. yield strength 40,000 PSI) thickness coated steel, 16" wide, 2" high panel continuous over 2 or more spans without endlaps. Adjacent panels are seamed together alongside joints using an electric seamer tool.
2. **BERRIDGE CONTINUOUS ZEE-RIB:** One-piece assembly fabricated from No. 24 MSG (Min. yield strength 40,000 PSI) coated steel. Zee-Rib located at each panel side joint, continuous and equal to length of Berridge Zee-Lock Panels (Item 1).
3. **FASTENERS (SCREWS):**
  - a. **For Connection of Item #2 to Item #7:** #14 self-drilling steel screw through Densdeck and rigid board and connected to metal deck at 8" on center. Fastener length to be adjusted to account for thickness of rigid insulation and liner panel with  $\frac{3}{4}$ " minimum penetration into metal deck.
  - b. **For Connection of Item #7 to Item #8 (Not Shown):** #12-14 self-drilling fastener spaced 5  $\frac{1}{2}$ " on center. Panel sidelaps to be connected using (1) #8 x  $\frac{5}{8}$ " modified truss-head fastener at 18" on center. Fasteners at side lap to be spaced 8" on center.
4. **FELT PAPER:** Two ply, No. 30 lb per 100 sq. ft.
5. **GYPSUM BOARD:** Minimum  $\frac{1}{2}$ " designated Georgia-Pacific Densdeck. Opposite side edges have a tongue and groove configuration. Butt end joints to be staggered and occur over steel deck crests.
6. **INSULATION:** Max. 4" thick, 2.25 pcf density 20 psi compressive strength rigid closed cell polyisocyanurate core fiberglass faced insulation.
7. **SUBSTRUCTURE (LINER):** No. 22 MSG (Min. yield strength 40,000 PSI) coated steel. Corrugation height to be minimum of  $\frac{3}{4}$ ". Endlaps to occur over purlins with panels overlapped minimum 4".
8. **PURLINS:** 12 MSG (Min. 50,000 PSI) coated steel. Spacing to be 1'6" on center with purlins pre-drilled at metal deck and purlin intersection.

## **BERRIDGE MANUFACTURING COMPANY**

2610 Harry Wurzbach Road, San Antonio, TX 78209 | 800-669-0009 | Fax 210-650-0379

Visit [www.berridge.com](http://www.berridge.com) for the most up-to date information. All information herein subject to change without notice. For technical assistance please contact Berridge.