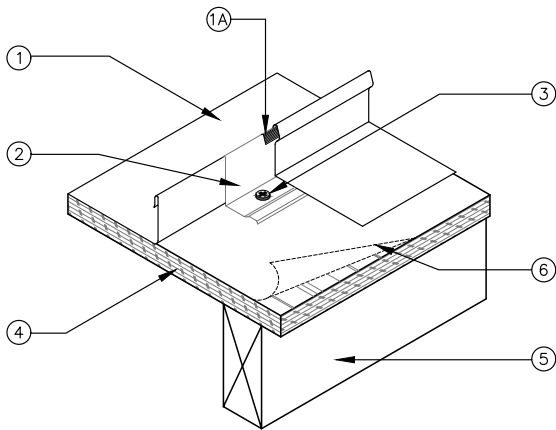


UL 580 CLASS 90 RATED PRODUCT ASSEMBLIES

CONSTRUCTION NO. 690 - Aluminum BERRIDGE ALUMINUM CEE-LOCK PANEL WITH INDIVIDUAL CEE-CLIPS OVER 15/32" PLYWOOD SHEATHING



- BERRIDGE CEE-LOCK PANEL:** 0.032" coated aluminum, 16 1/2" wide, 1 1/2" high continuous over two or more spans without endlaps.
 - An optional vinyl weatherseal (U.S. Patent 4641475) may be used at panel side joints
- BERRIDGE CEE-CLIP:** One-piece, 1 1/2" high x 1 3/16" wide x 3 1/2" long, No. 24 MSG (Min. yield strength 40,000 PSI) stainless steel. Clip spaced 20" on center at panel side joint.
- FASTENERS (SCREWS):**
 - For Connection of Item #2 to Item #5: #12-11 x1" GP fastener, two fasteners per clip.
 - For Connection of Item #5 to Item #6 (Not Shown): 2.5" long 8d hot galvanized ring shank patio/ deck nails spaced 6" maximum at plywood to joist connection and plywood ends
- FELT PAPER:** Two ply, No. 30 lb per 100 sq. ft.
- SUBSTRUCTURE (PLYWOOD):** Nominal 15/32" thick, 4-ply B-C Group 1 exterior plywood.
- WOOD JOIST:** Joists to be min. Nominal 2x10" wood members spaced max. 24" on center.

BERRIDGE MANUFACTURING COMPANY

2610 Harry Wurzbach Road, San Antonio, TX 78209 | 800-669-0009 | Fax 210-650-0379

Visit www.berridge.com for the most up-to date information. All information herein subject to change without notice. For technical assistance please contact Berridge.