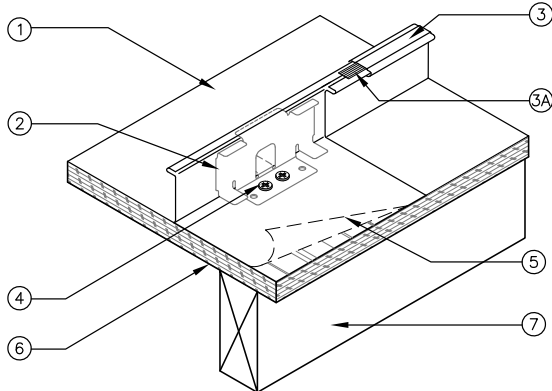


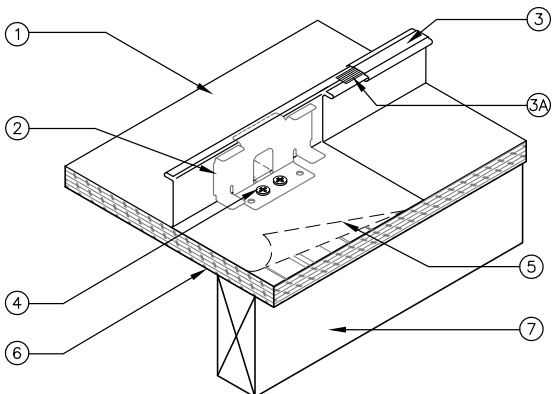
UL 580 CLASS 90 RATED PRODUCT ASSEMBLIES

CONSTRUCTION NO. 268B - Galvalume® BERRIDGE TEE-LOCK PANEL WITH INDIVIDUAL TEE-LOCK CLIPS OVER 19/32" PLYWOOD SHEATHING



1. **BERRIDGE TEE-LOCK PANEL:** No. 24 MSG (Min. yield strength 40,000 PSI) thickness coated steel, 18" wide, 2.375" high, continuous over three or more spans with no end laps.
2. **BERRIDGE TEE-LOCK CLIPS:** No. 16 MSG (Min. yield strength 50,000 PSI) coated steel, 6" long by 2.718" high. Base to have four 0.281" diameter guide holes to accommodate screw fasteners. Clips spaced 24" on center at every side lap.
3. **BERRIDGE TEE-LOCK SEAM CAP:** Nominal 1" wide x 1/2" deep fabricated from No. 24 MSG (40,000 PSI) coated steel. Cap continuously seamed over panel seams using an electric seaming tool.
 - a. An optional vinyl weatherseal may be used in Seam Cap
4. **FASTENERS (SCREWS):** #14x1" Type A steel screw without washer or #12-11 low profile #3 square drive wood screw. Two fasteners per clip
5. **FELT PAPER:** Two ply, No. 30 lb per 100 sq. ft.
6. **SUBSTRUCTURE (PLYWOOD):** Nominal 19/32" thick plywood APA rated sheathing (42/20) square edged. Butt ends not blocked. All butt and side joints to be sealed against leakage by using tape and/or caulk
7. **SUPPORTS:** Spaced max. 24" on center. May be one of the following:
 - a. Nom 2 x 6", No. 2 grade or better S-P-F, Hemlock Fir, Douglas Fir or Southern Yellow Pine, or equivalent
 - b. Wood trusses with a nom 2 x 4" upper chord of the same grade as item a
 - c. No. 22 MSG min. (Min. yield strength 3,000 PSI) cold formed coated steel

CONSTRUCTION NO. 268B - Aluminum BERRIDGE ALUMINUM TEE-LOCK PANEL WITH INDIVIDUAL STAINLESS STEEL TEE-LOCK CLIPS OVER 19/32" PLYWOOD SHEATHING



1. **BERRIDGE TEE-LOCK PANEL:** 0.032" coated Aluminum, 18" wide, 2.375" high, continuous over three or more spans with no end laps.
2. **BERRIDGE TEE-LOCK CLIPS:** No. 16 MSG (Min. yield strength 50,000 PSI) stainless steel, 6" long by 2.718" high. Base to have four 0.281" diameter guide holes to accommodate screw fasteners. Clips spaced 24" on center at every side lap.
3. **BERRIDGE TEE-LOCK SEAM CAP:** Nominal 1" wide x 1/2" deep fabricated from 0.032" coated aluminum. Cap continuously seamed over panel seams using an electric seaming tool.
 - a. An optional vinyl weatherseal may be used in Seam Cap
4. **FASTENERS (SCREWS):** #14x1" Type A steel screw without washer or #12-11 low profile #3 square drive wood screw. Two fasteners per clip
5. **FELT PAPER:** Two ply, No. 30 lb per 100 sq. ft.
6. **SUBSTRUCTURE (PLYWOOD):** Nominal 19/32" thick plywood APA rated sheathing (42/20) square edged. Butt ends not blocked. All butt and side joints to be sealed against leakage by using tape and/or caulk
7. **SUPPORTS:** Spaced max. 24" on center. May be one of the following:
 - a. Nom 2 x 6", No. 2 grade or better S-P-F, Hemlock Fir, Douglas Fir or Southern Yellow Pine, or equivalent
 - b. Wood trusses with a nom 2 x 4" upper chord of the same grade as item a
 - c. No. 22 MSG min. (Min. yield strength 3,000 PSI) cold formed coated steel

BERRIDGE MANUFACTURING COMPANY

2610 Harry Wurzbach Road, San Antonio, TX 78209 | 800-669-0009 | Fax 210-650-0379

Visit www.berridge.com for the most up-to date information. All information herein subject to change without notice. For technical assistance please contact Berridge.