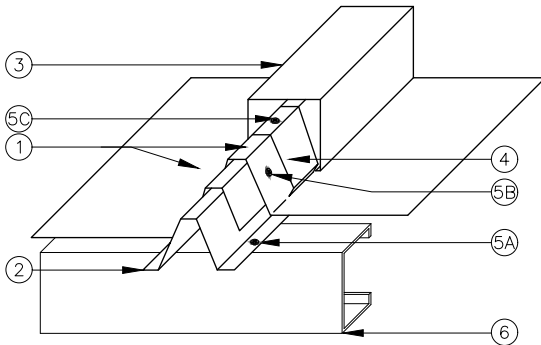


# UL 580 CLASS 90 RATED PRODUCT ASSEMBLIES

## CONSTRUCTION NO. 262 BERRIDGE BATTEN SEAM PANEL SYSTEM WITH CONTINUOUS INNER RIB INTO OPEN PURLINS (NO INSULATION)



- BERRIDGE DEEP VEE PANEL:** No. 24 MSG (Min. yield strength 40,000 PSI) coated steel, 16" wide, 1 1/2" high panel continuous over two or more spans without endlaps.
- BERRIDGE CONTINUOUS INNER RIB:** One-piece assembly fabricated from 24 MSG (Min. yield strength 40,000 PSI) coated steel. Inner Rib located at each panel side joint, continuous and equal to length of Berridge Deep Vee Panels (Item #1).
- BATTEN CAP:** Located at each panel side lap. Fabricated from 24 MSG (Min. yield strength 40,000 PSI) coated steel formed to snap over batten clips (Item #4)
- BATTEN CLIP:** Fabricated from 24 MSG (Min. yield strength 40,000 PSI) coated steel. Spaced 20" on center and located at each panel rib.
- FASTENERS (SCREWS):**
  - For Connection of Item #2 to Item #6:** #10 x 1" self-drilling, self-tapping fastener. Two fasteners per clip at each purlin location.
  - For Connection of Item #1 to Item #2:** #10 x 1" self-drilling, self-tapping fastener spaced 12" on center and staggered to either side of rib.
  - For Connection of Item #4 to Item #1:** #10 x 1" self-drilling, self-tapping fastener. One fastener per clip.
- PURLINS:** No. 16 MSG (Min. yield strength 50,000 PSI), spaced 5'0 on center maximum

### BERRIDGE MANUFACTURING COMPANY

2610 Harry Wurzbach Road, San Antonio, TX 78209 | 800-669-0009 | Fax 210-650-0379

Visit [www.berridge.com](http://www.berridge.com) for the most up-to date information. All information herein subject to change without notice. For technical assistance please contact Berridge.