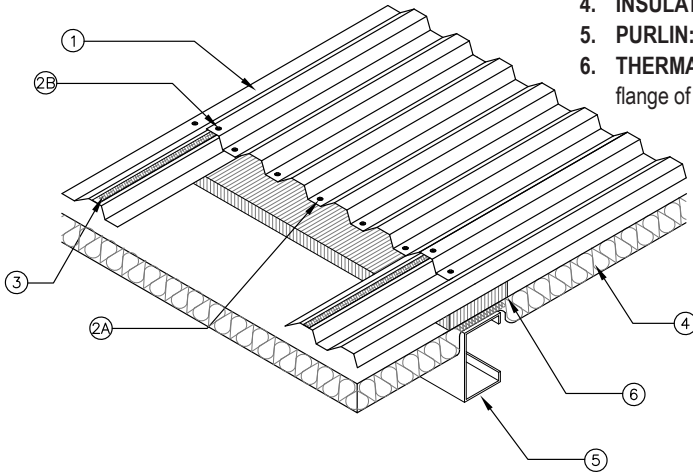


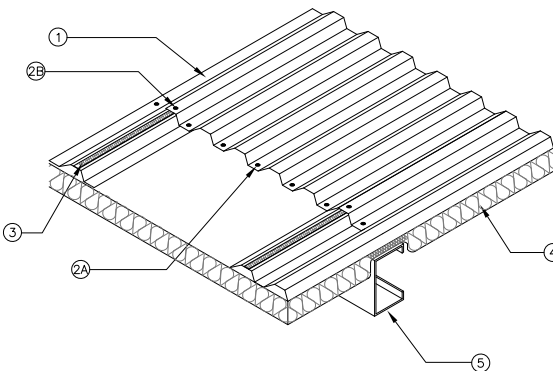
UL 580 CLASS 90 RATED PRODUCT ASSEMBLIES

CONSTRUCTION NO. 244 (WITH THERMAL BLOCKS) BERRIDGE DEEP DECK PANEL THROUGH 4" BLANKET INSULATION INTO OPEN PURLINS



- BERRIDGE DEEP DECK PANEL:** No. 24 MSF (Min. yield strength 40,000 PSI) coated steel, 36" wide, 1 1/2" high rib panel continuous over two or more spans. End laps to occur over purlins with panels overlapped a min. of 4" with lap centered over purlin web. A bead of sealant may be used at panel end and side laps.
- FASTENERS (SCREWS):**
 - For Connection of Item #1 to Item #5:** #12-14 self-drilling, self-tapping, hexhead steel screw with 5/8" OD formed steel washer and neoprene washer. Fasteners to be at panel and purlin intersection and adjacent to every major rib.
 - For Connection of Item #1 to Item #1 (Panel Lap):** #12-14 self-drilling, self-tapping, hexhead steel screw with 1/2" OD formed steel washer and neoprene washer. Fasteners to be 20" on center.
- TAPE SEALANT:** Used along panel side laps and endlaps for watertightness
- INSULATION:** (Optional) 4" Vinyl Faced compressible insulation
- PURLIN:** No. 16 MSG (Min. yield strength 50,000 PSI), maximum 5'0 spacing
- THERMAL BLOCK:** (Optional) 2 x 4" Polystyrene foam blocks placed along top flange of purlin between roof panels and insulation.

CONSTRUCTION NO. 244 (WITHOUT THERMAL BLOCKS) BERRIDGE DEEP DECK PANEL THROUGH 4" BLANKET INSULATION INTO OPEN PURLINS



- BERRIDGE DEEP DECK PANEL:** No. 24 MSF (Min. yield strength 40,000 PSI) coated steel, 36" wide, 1 1/2" high rib panel continuous over two or more spans. End laps to occur over purlins with panels overlapped a min. of 4" with lap centered over purlin web. A bead of sealant may be used at panel end and side laps.
- FASTENERS (SCREWS):**
 - For Connection of Item #1 to Item #5:** #14 x 3/4" self-drilling, self-tapping, hexhead steel screw with 5/8" OD formed steel washer and neoprene washer. Fasteners to be at panel and purlin intersection and adjacent to every major rib.
 - For Connection of Item #1 to Item #1 (Panel Lap):** #12-14 self-drilling, self-tapping, hexhead steel screw with 1/2" OD formed steel washer and neoprene washer. Fasteners to be 20" on center.
- TAPE SEALANT:** Used along panel side laps and endlaps for watertightness
- INSULATION:** (Optional) 4" Vinyl Faced compressible insulation
- PURLIN:** No. 16 MSG (Min. yield strength 50,000 PSI), maximum 5'0 spacing

BERRIDGE MANUFACTURING COMPANY

2610 Harry Wurzbach Road, San Antonio, TX 78209 | 800-669-0009 | Fax 210-650-0379

Visit www.berridge.com for the most up-to date information. All information herein subject to change without notice. For technical assistance please contact Berridge.