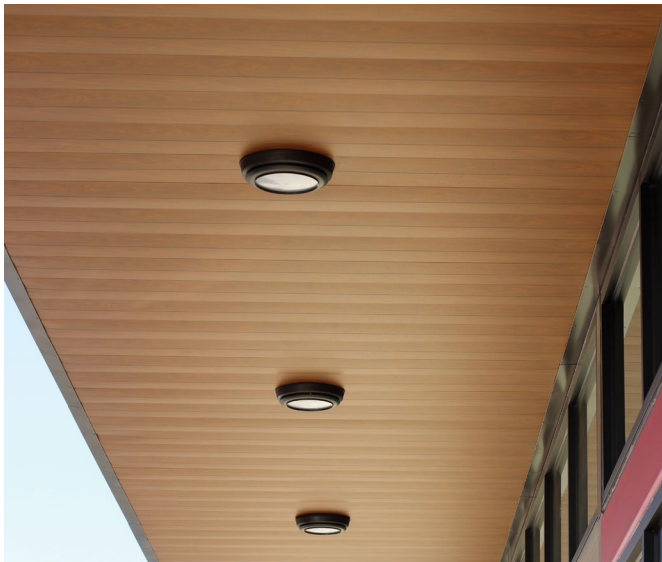


Berridge L-Panel

SOFFIT, CEILING, AND FASCIA PANEL SYSTEM



The Berridge L-Panel is a versatile and maintenance-free panel for use on soffit, ceilings, or fascia. The smooth, stucco embossed, and vented options allow this panel to be used throughout a project for many applications.

Materials

24 and 22 Gauge Steel
0.032 Aluminum

Specifications

Uses: Soffit, Ceiling, Fascia, Screen Wall
Coverage: 11 5/8"

Finishes: Smooth, optional stucco embossed

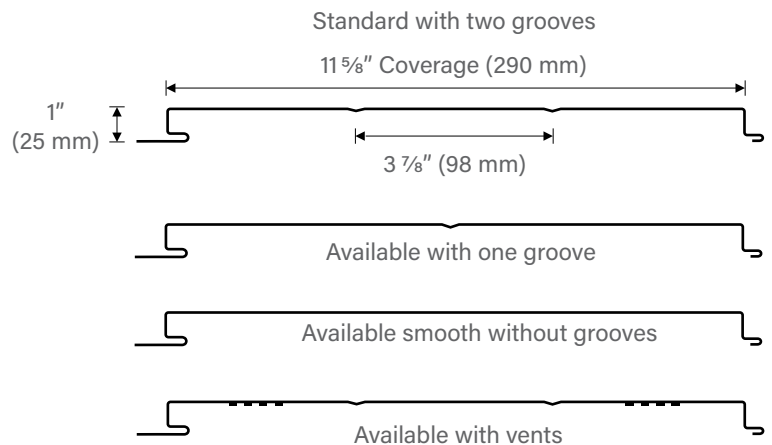
Fasteners: Concealed

Applications: Vertical over open framing or solid sheathing

Profile: Optional vee-grooves, smooth, or venting

Installation

- Panel is available from the factory in continuous lengths to a maximum of 40'
- May be site-formed using the Berridge FP-16 Roll Former
- Vented option provides 5.19 square inches of Net Free Vent Area (NFVA) per linear foot of panel. (BMC does not recommend vented products in applications subject to aggressive atmospheres, marine environments or high humidity due to the corrosive nature of these environments on raw edges of steel.)
- 0.032 Aluminum is factory formed only



Pictured Above

Project: The Oaks at Slaughter TAOS - Austin, TX
General Contractor: White Construction
Installing Contractor: TECTA America Austin, LLC
Color: Rosewood

BERRIDGE L-PANEL TESTING AND CERTIFICATION SUMMARY CHART

CATEGORY	CHARACTERISTIC	TEST METHOD	PURPOSE	RESULT
PERFORMANCE	■ Uplift Resistance	ASTM E-1592	Test method to determine uplift resistance of open framing systems	See Load Chart on Berridge website
PRODUCT LISTINGS	■ Florida Product Approval	TAS 125	Local and state approval of products and systems for compliance with the structural requirements of the Florida Building Code	FL# 14082.3 HVHZ (24 GA - Girts)
	■ Miami Dade	TAS 202 TAS 201 TAS 203 ASTM E8	Miami Dade County approval of building products directly related to the structural wind resistance	NOA #20-1013.11 (24 GA - Girts)
	■ TDI Listed	ASTM E-1592	Texas Department of Insurance Listing for wind capacities	EC-88 (24 GA - Girts)

■ - Steel only □ - Steel and Aluminum
For further details please visit www.berridge.com



CORPORATE HEADQUARTERS
2610 Harry Wurzbach Road
San Antonio, TX 78209
(800) 669-0009
www.Berridge.com