

# Cee-Lock (11 1/2") Roll Former

## BERRIDGE CL-16



### MATERIAL

24 GA and 22 GA Galvalume®  
0.032 Aluminum

### COIL & COVERAGE

**Coil Size:** Nominal 16" (15 7/8")

**Coil Quantity:** Requires 139.13 SF of coil per square of coverage

### ACCESSORIES

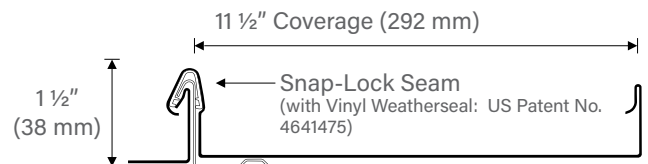
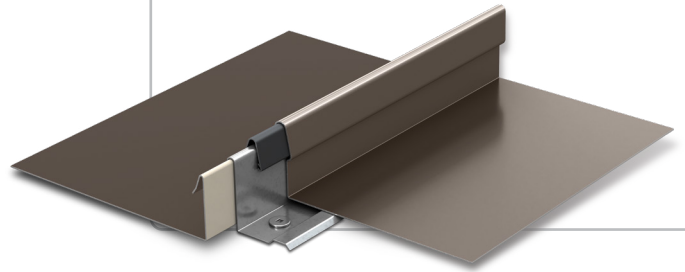
**Cee-Lock Clips:** 66 clips per square of coverage

**Stainless Steel Cee-Lock Clips:** Use with Aluminum panels

**Continuous Cee-Rib:** Requires 104.35 LF per square of coverage

**Vinyl Weatherseal:** 104.35 LF per square of coverage

*The Berridge Model CL-16 Portable Roll Former forms continuous-length Berridge Cee-Lock Panels. Berridge Cee-Lock panels have an integrated snap-lock seam with an optional patented vinyl weatherseal that can be applied during the roll forming process. The 11 1/2" Cee-Lock panels are only available in a smooth finish.*



*Pictured Above*

Project: Homes Jr. High School  
Architect: Robin Randall with Legat Architects  
Installing Contractor: Metalmasters  
Color: Shasta White

### SPECIFICATIONS

Mounted on heavy duty 4-wheel table

**Width:** 34" **Length:** 146" **Height:** 60"

**Weight:** 3,080 lbs with shipping cover

- 2 HP electric motor - 220V single-phase current
- High Speed - 45' per minute
- Built-in uncoiler (up to 2,000 lb coil)
- Stainless steel heat-treated, hardened rollers
- Unique side production for ease of operation
- Mechanical slitter shear
- Accurate-length gauge (computer optional)
- Continuous-length panels, based on coil size
- All sealed bearings
- Coil handling apparatus included
- Sliding panel support wheel
- Machine inserts vinyl weatherseal (optional)