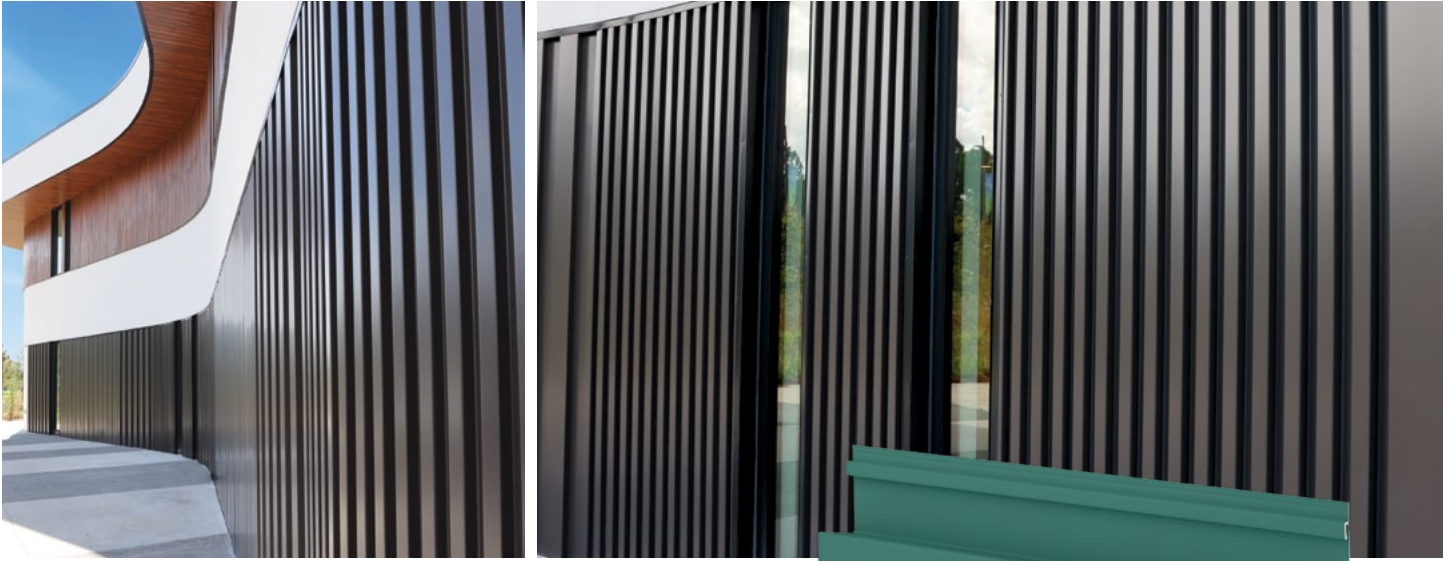


Berridge BR-12 Panel

WALL AND FASCIA PANEL SYSTEM



The Berridge BR-12 Panel is a metal wall panel designed for horizontal and vertical wall applications. This bold concealed fastener panel interlocks with the Berridge HC-16, HS-8, HS-12, HR-4, HR-16, and Reveal Series wall panels to provide endless design possibilities.

Materials

24 and 22 Gauge Steel
0.032 and 0.040 Aluminum

Specifications

Uses: Wall, Fascia, Screen Wall, Berridge Fencing System

Coverage: 12"

Finishes: Smooth

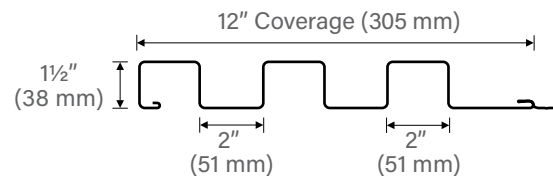
Fasteners: Concealed

Applications: Vertical on fencing; horizontal or vertical over open framing or solid sheathing

Pattern: 1 1/2" height and 2" rib with 2" reveal

Installation

- Panel is available from the factory in continuous lengths to a maximum of 40'.
- Interlocks with HC-16, HR-4, HR-16, HS-8, HS-12, and the Reveal Series panels.
- Use siding starter strip to start the panel.
- Use channel closure at inside and outside corners with or without rubber closures.
- Use standard channel at jambs with rubber closures.
- Use special channel at jambs without rubber closures.
- Use BR-12 rubber closures to prevent air infiltration.



Pictured Above

Project: Bonnet Springs Park Welcome Center - Lakeland, FL

Architect: Sasaki Associates, Inc.

General Contractor: Rodda Construction, Inc.

Installing Contractor: CA Systems, Inc.

Color: Dark Bronze



Detail of BR-12 Panel Interlock

All information subject to change without notice. See website for details, specifications, and Watertightness Warranty requirements.

© Berridge Manufacturing Company 2024 • (800) 669-0009 • www.Berridge.com

BERRIDGE BR-12 PANEL TESTING AND CERTIFICATION SUMMARY CHART

CATEGORY	CHARACTERISTIC	TEST METHOD	PURPOSE	RESULT
PERFORMANCE	<input type="checkbox"/> Uplift Resistance	ASTM E-1592	Test method to determine uplift resistance of open framing systems	See Load Chart on Berridge website
AIR AND MOISTURE	<input type="checkbox"/> Water Penetration	ASTM E-331**	Test method for water penetration of metal roofs by uniform static air pressure difference	No Leakage at 15.0 PSF Pressure Differential
	<input type="checkbox"/> Air Leakage	ASTM E-283**	Test method for rate of air leakage through exterior metal roofs	Less than 0.01 CFM at 6.24 PSF Pressure Differential
PRODUCT LISTINGS	<input type="checkbox"/> Florida Product Approval	TAS 125	Local and state approval of products and systems for compliance with the structural requirements of the Florida Building Code	FL #37310.2 (24 GA - Steel Girts) FL #37310.1 (0.032 AL - Steel Girts)
	<input type="checkbox"/> ICC-ES	ASTM E-1592	Capacity reported by the International Code Council	ESR-4712 (24 GA - Steel Girts; 0.032 or 0.04 AL - Steel Girts)

■ - Steel only □ - Steel and Aluminum

For further details please visit www.Berridge.com

** See HR-16 Panel for test results on ASTM E-331 and ASTM E-283 with similar panel seams



CORPORATE HEADQUARTERS
 2610 Harry Wurzbach Road
 San Antonio, TX 78209
 (800) 669-0009
www.Berridge.com