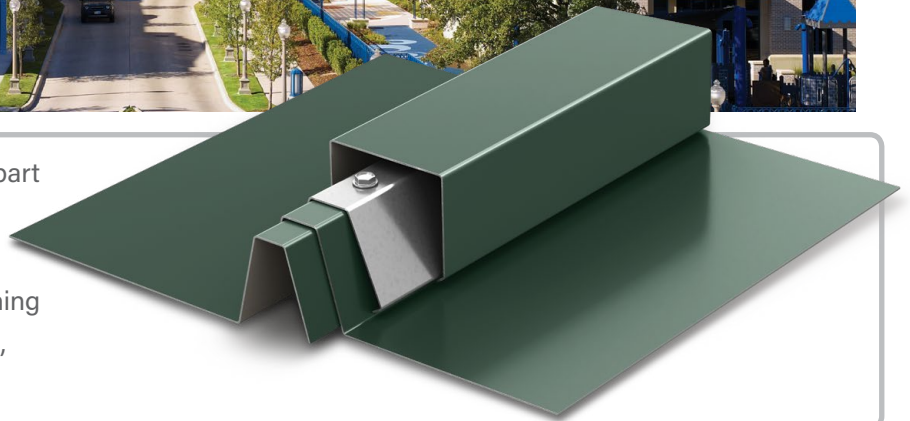


# Berridge Batten Seam Panel

## ALTERNATIVE SYSTEM



The Berridge Batten Seam Panel system is a two-part system utilizing the Deep-Vee Panel and square snap-on battens for bold panel lines. This system may be installed over open framing or solid sheathing and uses concealed fasteners to create its smooth, wide seam appearance.



### Materials

24 Gauge Steel

### Specifications

Uses: Roof, Fascia

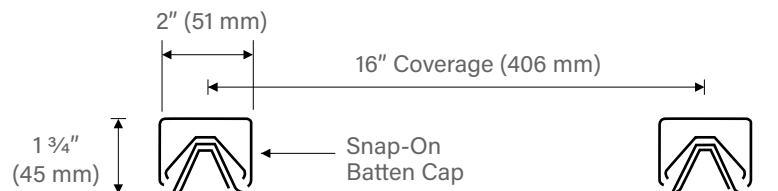
Coverage: 16"

Finishes: Smooth

Fasteners: Concealed

Applications: Open framing, solid sheathing

Seam: 2" wide and 1 3/4" high snap-on batten cap



### Installation

- Deep-Vee Panel, snap-on batten cap, and the batten seam inner rib\*\* are available from the factory in continuous lengths to a maximum of 40'
- May be site formed in continuous lengths with the Berridge BP-21 Roll Former
- Use Batten Clip typically at 20" O.C. along each panel rib
- Estimate 50 clips/sq with 1 fastener/clip
- Use Batten End Cap as mechanical closure at bottom of panel runs
- Use Zee-Flashing as mechanical weather closure at ridges, hips, etc. Field cut to fit between panel legs
- Use Standard Channel at end walls and flashed area\*
- Use Special Channel at gable ends and area where color will show on all sides\*
- Use Snap-On Batten Cap continuously at panel side joints. Estimate 75 LF/SQ. See typical details for splice and eave turn-downs
- Use Batten Seam Inner Rib\*\* with Inner Rib Expansion Clip to allow for thermal movement of panels over 30' long

\* Trim Drawing with dimensions and finish side required for all Berridge manufactured trim pieces

\*\* Batten Seam Inner Rib required for UL 90 certification

*Pictured Above*

Project: Cooks Hospital

Architect: RTKL Associates, Inc.

General Contractor: Linebeck Group, LLS

Installing Contractor: Jeff Eubank Roofing Co.

Color: Custom Rich Blue

*Pictured Right*

Project: Southwest Coil

Architect: PSRBB Industrial Group Inc.

General Contractor: Reid & Associates

Installing Contractor: Tadco Roofing

Color: Patina Green



All information subject to change without notice. See website for details, specifications and Watertightness Warranty requirements.

© Berridge Manufacturing Company 2018 • 800-669-0009 • www.berridge.com

# BERRIDGE BATTEN SEAM TESTING AND CERTIFICATION SUMMARY CHART

CATEGORY	CHARACTERISTIC	TEST METHOD	PURPOSE	RESULT
FIRE	■ Room Fire Performance	UL 790	Test methods for fire tests of roof coverings	Class A Rating
	■ Room Fire Performance	UL 263	Fire tests of building construction and materials	Design Numbers: P225, P227, P230, P237, P250, P259, P508, P510, P512, P514, P518, P701, P711, P713, P717, P719, P720, P722, P723, P726, P731, P732, P734, P801, P815, P819, & P824
ENVIRONMENTAL	■ Impact Resistance	UL 2218	Impact resistance of prepared roof coverings	Class 4 Rating
ROOF LISTINGS	■ Florida Product Approval	TAS 125	Local and state approval of products and systems for compliance with the structural requirements of the Florida Building Code	FL# 14210.6 (24 GA-Purlins)
	■ Underwriters Laboratories	UL 580 Uplift Class 90	Standard for Tests for Uplift Resistance of Roof Assemblies	Construction No. 262 (Open Framing)

■ - Steel only    □ - Steel and Aluminum  
 For further details please visit [www.berridge.com](http://www.berridge.com)



**CORPORATE HEADQUARTERS**  
 2610 Harry Wurzbach Road  
 San Antonio, TX 78209  
 (800) 669-0009  
[www.Berridge.com](http://www.Berridge.com)