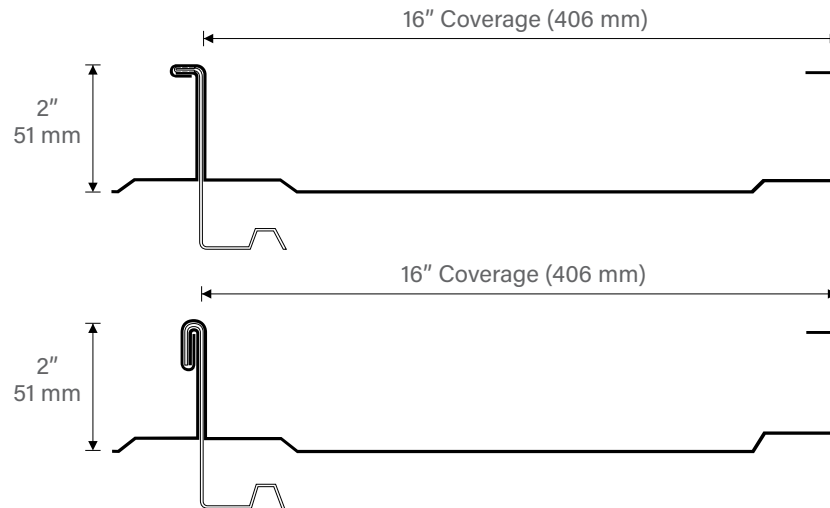


Berridge 3 Inch Zee-Rib

FOR USE WITH ZEE-LOCK & DOUBLE-LOCK ZEE-LOCK PANELS



Materials

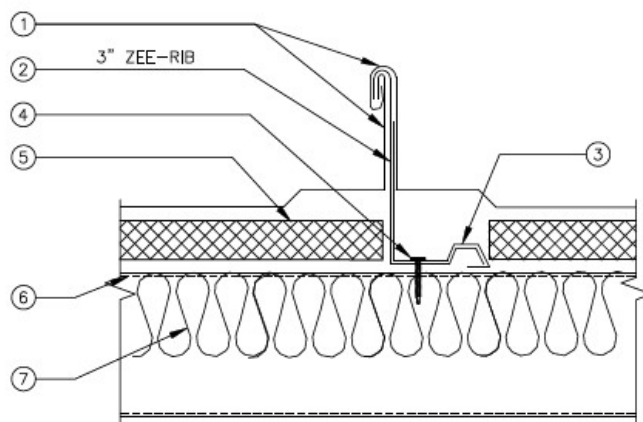
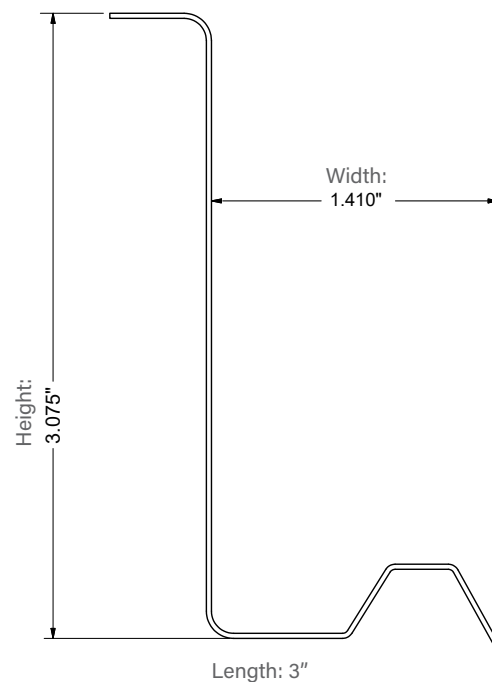
24 Gauge Steel

Installation

- Install per Berridge Installation Details
- Attachment: Use (2) 1/4-14 DP3 self-drilling fastener to open frame steel supports with 24 gauge panel. Use (4) #12-14 T-3 HWH to open framed steel supports with 22 gauge panels.
- Spacing: 60" o.c. maximum to minimum 16 GA steel supports
- Zee-Rib backer plate required for high wind speeds.
- Required with loose insulation (3" < thickness < 6") installed over open framing.
- Not for use with Aluminum

Note:

*If specifications, local codes, or other regulations dictate specific wind uplift requirements, consult Berridge's Engineering Department at (800) 669-0009. It may be necessary to use a different clip, clip spacing, fastener, fastener spacing, or assembly.



1. Double-Lock Zee-Lock Panel
2. 3" Zee-Rib
3. Backer Plate (if required)
4. Clip Fasteners
5. 1" Thermal Block
6. Open Framing Members
7. 6" Maximum loose insulation



CORPORATE HEADQUARTERS

2610 Harry Wurzbach Road
San Antonio, TX 78209
(800) 669-0009
www.Berridge.com

All information subject to change without notice. See website for details, specifications and Watertightness Warranty requirements.

© Berridge Manufacturing Company 2025 • (800) 669-0009 • www.Berridge.com