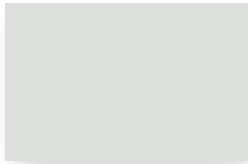


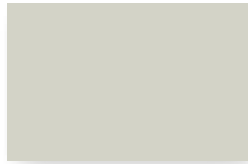


STANDARD COLORS

Due to limitations in the printing process, please request actual color chips for accurate color viewing.



SHASTA WHITE



PARCHMENT



ALMOND



SIERRA TAN



BUCKSKIN



MEDIUM BRONZE



AGED BRONZE



COPPER BROWN



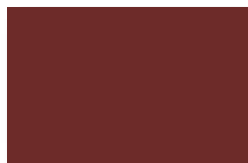
DARK BRONZE



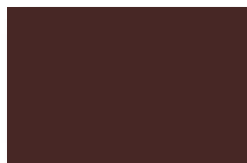
TERRA-COTTA



DEEP RED



COLONIAL RED



BURGUNDY



BRISTOL BLUE



ROYAL BLUE



PATINA GREEN



HEMLOCK GREEN



TEAL GREEN



FOREST GREEN



EVERGREEN



HARTFORD GREEN



CITYSCAPE



ZINC GREY



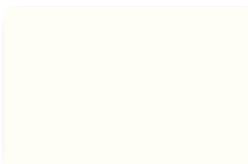
CHARCOAL GREY



MATTE BLACK

PREMIUM COLORS

Berridge premium colors require a nominal surcharge.



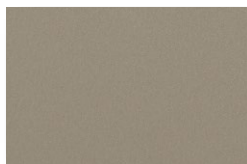
NATURAL WHITE



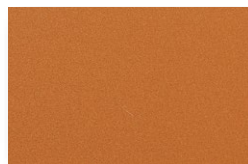
AWARD BLUE

METALLIC COLORS

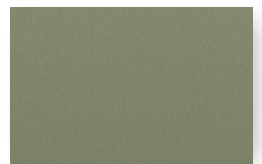
Berridge metallic colors are premium finishes which require a nominal surcharge. Due to limitations in the printing process, please request actual color chips for accurate color viewing.



CHAMPAGNE



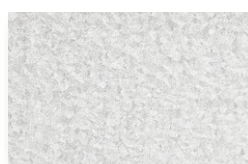
COPPER-COTE™



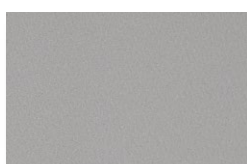
ANTIQUÉ
COPPER-COTE

NATURAL METAL FINISH

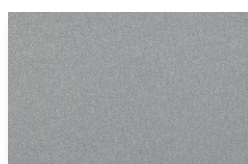
Berridge Acrylic-Coated Galvalume® is a coated sheet product that combines the corrosion resistance of GALVALUME® steel sheet with a clear, organic resin applied to the top side and bottom side of GALVALUME® substrate.



ACRYLIC-COATED
GALVALUME®



ZINC-COTE™



LEAD-COTE™



PREWEATHERED
GALVALUME®



Energy Star is only valid in the United States.

All colors except Award Blue, Charcoal Grey, Dark Bronze, Evergreen, Hartford Green, Matte Black and Teal Green comply with LEED® v3 & Energy Star requirements for roof slopes greater than 2:12. Natural White complies with LEED® v3 & Energy Star requirements for low slopes less than or equal to 2:12.

**KYNAR 500® HYLAR 5000™ SPECIFICATIONS FOR
GALVALUME® AND ALUMINUM* COIL COATING APPLICATIONS:**

TESTED PROPERTY	TESTING METHOD	KYNAR 500® or HYLAR 5000™
Colors Available	---	See color chart on reverse side
Specular Gloss	ASTM D-523	Low and medium gloss only
Color Uniformity	ASTM D-2244	Color controlled both instrumentally and visually
Dry Film Thickness	ASTM D-7091, ASTM D-1005, NCCA 11-13, 11-14, 11-15	Primer 0.20 ± 0.05 mil, Topcoat 0.75 ± 0.05 mil
Hardness	ASTM D-3363, NCCA 11-12, Eagle Turquoise Pencils	HB Minimum
Adhesion (X-Cut)	ASTM D-3359	No adhesion loss
Adhesion (Crosshatch)	ASTM D-3359	No adhesion loss
Direct Impact Flexibility	ASTM D-2794, Gardner Impact Tester, 1/10" Distortion	Excellent, no removal
Reverse Impact Flexibility	NCCA Spec. 11, ASTM D-2794, Gardner Impact Tester, 5/8" ball Impact force in inch pounds equal to metal thickness	Excellent, no cracking or loss of adhesion
Formability	ASTM D-4145, 180° T-Bend on 1/8 Mandrel	No cracks or loss of adhesion
Salt Spray Resistance	ASTM B-117	Passes 2000 hrs on Galvalume® Passes 4000 hrs on Aluminum
Humidity Resistance	ASTM D-2247	Passes 2000 hrs on Galvalume® Passes 4000 hrs on Aluminum
Acid Resistance	ASTM D-1308, Proc. 3.1.1 10% Sulfuric Acid spot test, 24 hr exposure	Excellent, no effect
Alkali Resistance	ASTM D-1308, Proc. 5.2 10% Sodium Hydroxide, 24 hr exposure	Excellent, no effect
Abrasion Coefficient	ASTM D-968	100 liters/mil topcoat
Detergent Resistance	ASTM D-2248, 72 hrs immersion in 3% solution at 100°F	Excellent, no effect
Resistance to Acid Pollutants	ASTM D-1308 Proc. 3.1.1 24 hr exposure 10% HNO ³ vapors	Excellent, no effect
Weathering - Color Retention	ASTM D-2244, 20 yrs, 45° South Florida	Maximum 5 NBS units color change
Weathering - Chalk Resistance	ASTM D-4214, 20 yrs, 45° South Florida	Not worse than No. 8 rating
Erosion	20 yrs, 45° South Florida	Maximum 15% loss

Notes:

1. ASTM - American Society for Testing Materials
2. NCCA - National Coil Coaters Association
3. Galvalume® is 55% Aluminum-Zinc alloy coated sheet steel and is a registered trademark of BIEC International, Inc.

*Limited Availability for Aluminum, Consult Berridge

**BMC SAN ANTONIO
CORPORATE HQ**
6515 Fratt Rd.
San Antonio, TX 78218
210-650-3050
Fax 210-650-0379

**BMC SEGUIN
MANUFACTURING**
2201 Rudeloff Rd.
Seguin, TX 78155
830-401-5200
Fax 830-303-0530

**BMC HOUSTON
BRANCH FACILITY**
1720 Maury St.
Houston, TX 77026
713-223-4971
Fax 713-236-9422

**BMC DALLAS
BRANCH FACILITY**
2015 California Crossing
Dallas, TX 75220
972-506-8496
Fax 972-506-8478

**BMC DENVER
BRANCH FACILITY**
7505 E 41st Ave
Denver, CO 80216
303-322-3703
Fax 303-322-3810

**BMC CHICAGO
BRANCH FACILITY**
1175 Carolina Dr.
W. Chicago, IL 60185
630-231-7495
Fax 630-231-7520

**BMC PHOENIX
BRANCH FACILITY**
5717 W. Washington St.
Phoenix, AZ 85043
602-385-1237
Fax 210-650-0379

**BMC ATLANTA
BRANCH FACILITY**
319 Lee Industrial Rd.
Austell, GA 30168
770-941-5141
Fax 770-941-7344

**BMC OKLAHOMA CITY
BRANCH FACILITY**
1400 Exchange Ave
Oklahoma City, OK 73108
405-248-7404
Fax 210-650-0379

**BMC KANSAS CITY
BRANCH FACILITY**
1235 Southwest Blvd.
Kansas City, KS 66103
913-227-0855
Fax 210-650-0379

**BERRIDGE CALIFORNIA
SALES CORPORATION****
18732 Corby Ave.
Artesia, CA 90701
562-402-2081
Fax: 562-865-7878

**BERRIDGE FLORIDA
SALES CORPORATION****
8802 Venture Cove
Tampa, FL 33637
813-335-4505
Fax: 210-650-0379



BERRIDGE MANUFACTURING COMPANY
www.berridge.com

Roofs of Distinction

**Berridge California and Florida Sales Corporations are separate entities from Berridge Manufacturing Company

Summer 2016 Berridge Color Chart - 10M Printed in the U.S.A.