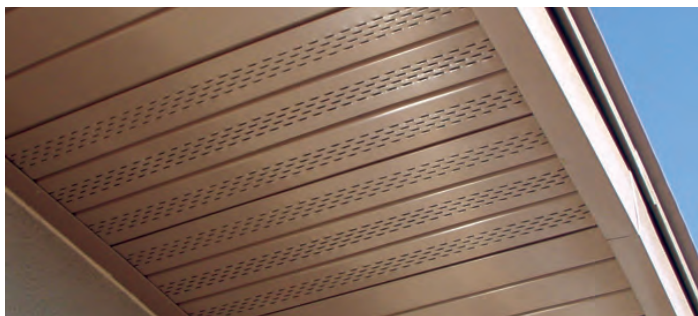


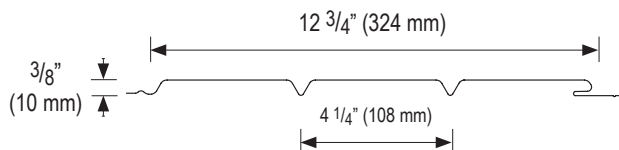
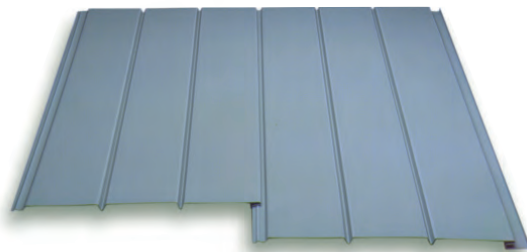
Berridge Vee-Panel

Wall, soffit and facade system. Versatile and maintenance-free prefinished metal wall panels for open spans.

- Available in 24 & 22 gauge
- Concealed fasteners
- Vee-Groove appearance
- Use horizontally for soffit & vertically for wall
- Panel may be vented
- Open framing or solid deck applications
- Optional wood grain embossing



12-3/4" wide Vented Vee-Panel provides approximately 6.08 square inches of Net Free Vent Area (NFVA) per square foot of panel (6.46 square inches per lineal foot).
 Note: Berridge Manufacturing Company does not recommend vented products in applications subject to aggressive atmospheres, marine environments or high humidity due to the corrosive nature of these environments on raw edges of steel.



VEE-PANEL SECTION PROPERTIES BASED ON 24 GAUGE 40 K.S.I.			
VEE-PANEL	I_x (in ⁴ /ft)	S_x (in ³ /ft)	M_x (in-K/ft)
Panel Width	12 3/4"	12 3/4"	12 3/4"
Positive Bending	0.00395	0.01660	0.397
Negative Bending	0.00451	0.01560	0.374

SPAN (FT)	POSITIVE WIND LOAD			NEGATIVE WIND LOAD		
	1-SPAN	2-SPAN	3-SPAN	1-SPAN	2-SPAN	3-SPAN
	Panel Width	12 3/4"	12 3/4"	12 3/4"	12 3/4"	12 3/4"
1.0	265	249	291	249	265	309
1.5	77d	111	129	88d	118	137
2.0	32d	62	65d	37d	66	65d

NOTES:
 1. All loads meet L/240 Deflection Criteria. (d) Deflection governs allowables.
 2. Values based on 2007 AISI specifications.
 3. Positive load direction is towards panel face.
 4. Negative load direction is away from panel face.

For specific job application recommendations, please contact Berridge Technical Department 1-800-231-8127.

SPECIFICATIONS

(Complete specifications available at www.berridge.com)

PRODUCT:

Furnish and install Berridge Vee-Panel wall and soffit system as manufactured by Berridge Manufacturing Company, San Antonio, Texas.

MANUFACTURE:

Vee-Panel provides a 12-3/4" coverage and a panel depth of 3/8". Panels are available from the factory in continuous lengths to a maximum of 40'-0". Panel is standard with vee grooves spaced at 4-1/4" on center, optional wood-grain embossing or optional vented profile for soffit applications.

ENGINEERING:

Acceptable installation design over engineered framing or solid structural sheathing. Approved underlayment to cover sheathing, (run horizontally starting at the sill and run up the wall, review Berridge underlayment details for complete installation instructions).

MATERIALS, FINISH INFORMATION & CONSTRUCTION DETAILS:

Reference web site: www.berridge.com



Berridge Manufacturing Company
 6515 Fratt Road
 San Antonio, Texas 78218
 (800) 669-0009 • www.berridge.com