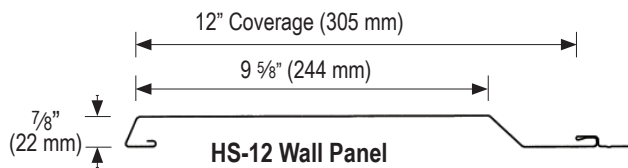
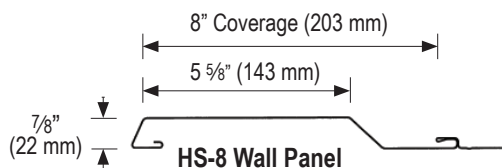
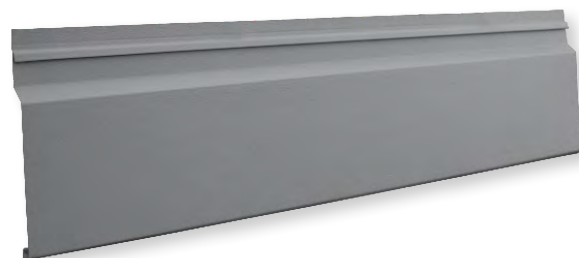


NEW PRODUCT!

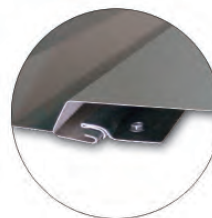
Berridge HS-8 & HS-12

Prefinished horizontal or vertical wall panel.
Versatile and maintenance-free.

- Available in 24 & 22 gauge steel
- Stucco embossed texture
- Consult BMC for smooth finish
- Concealed fasteners
- Multi-purpose wall panel
- May be used horizontally or vertically
- Wide rib appearance
- Interlocks with HR-16 wall panel
- Factory formed to 40' max



HS-8 & HS-12 Wall Panels interlock with each other and also with the Berridge HR-16 Wall Panel, as shown above, to form various lines and texture.



Detail of HS-12 & HS-8
Panel Interlock



SPECIFICATIONS

(Complete specifications available at www.berridge.com)

PRODUCT:

Furnish and install Berridge [HS-8] or [HS-12] wall panel system as manufactured by Berridge Manufacturing Company, San Antonio, Texas.

MANUFACTURE:

HS-8 provides an 8" coverage and a panel depth of 7/8". HS-12 provides a 12" coverage and a panel depth of 7/8". Panels are available from the factory in continuous lengths to a maximum of 40'-0".

ENGINEERING:

Acceptable installation design over engineered framing or solid structural sheathing. Approved underlayment to cover sheathing, (run horizontally starting at the sill and run up the wall, review Berridge underlayment details for complete installation instructions).

MATERIALS, FINISH INFORMATION & CONSTRUCTION DETAILS:

Reference web site: www.berridge.com



Berridge Manufacturing Company
6515 Fratt Road
San Antonio, Texas 78218
(800) 669-0009 • www.berridge.com